

WHERE THERE IS YALCIN PROJECT, THERE IS ALWAYS A RESOLUTION

NOVADA
TOKAT

TEKNO SA
MCDONALD'S
KIGILI

FLO

NOVADA
TOKAT

BURGER KING
BIRTEKS

YALCIN PROJECT

ENGINEERING ARCHITECTURE CONSULTATION LIMITED COMPANY

Maslak Mah. Akasya Sok. No:2 Mashattan A5 Blok Kat:4 No:34 Sarıyer-İstanbul

Phone Number:+90 (212) 330 48 64-65 Fax:+90 (212) 330 48 65

e-mail:hyalcin@yalcinproje.com, info@yalcinproje.com

2016





DESIGN, BUILD & TRADE

WHERE THERE IS YALCIN PROJECT, THERE IS ALWAYS A RESOLUTION



The PREFACE of the General Manager

We have been doing the design and consulting services awarded to our company by the well known international groups of companies in the world who are the owners of these jobs since 1994. We completed the design and consulting services of most of them. Some are still on process.

Our past and current jobs are respectively highly appreciated achievements. We have done the design and consulting services not only for Superstructures but also Infrastructures. As the types of works are concerned; they are the design and consulting services of superstructures such as high rise buildings, collective housing, shopping centers, villa housing, Gymnasium Halls, Television Towers, Industrial Buildings, Roads, Via-Ducts, Bridges and all the infrastructures such as foundations, all underground utilities such as storm drain, sewer, domestic water lines, electric and telephone cables and other similar structures.

Our software programs that we use for the design works are certified as “Etabs v9.7.4 Non Linear, Safe 12.3.1, Csi Col, Staadpro V8, Ram Connection, Runet Express, Sap2000, Tekla Structures”

Our Design and Consulting Services are always in conformity with ISO9001:2000, Iso14001:2004 and OHSAS 18001:1999.

We are ready to repeat our achievements on these works at any time when our respective clients demand.

Our clients are both from inside the country and abroad. They are from Germany, Iran, Kazakhstan, Ukraine, Tataristan, Turkmenistan, Iraq, Libya and Bulgaria. Some of them benefitted our services years ago and some have been benefitting for years. As giving only a single example; we accomplished the design of the 8.500.000 square meter closed area in the various types of construction.

Among all our clients that may be numbered as more than one hundred not a single of them is said to be unsatisfied by either our design or consulting services.

Our company deserves to claim that we do our job to the full satisfaction of our client.

Hayati YALÇIN
General Manager
Yalcin Project



The details of the works that we go step by step are;

A) DESIGN

Our design Works cover all types of A&E Projects such as;

1. **GEOTECHNICAL DESIGN** is done after the Ground Survey to adjust the loading capacity as in the California Bearing Ratio. Preferences on the selection of the construction area or its renewal will be able to be maintained depending on the data obtained from CBR.
2. **ARCHITECTURAL DESIGN** of all disciplines.
3. **CIVIL DESIGN** to clarify all civil works.
4. **STRUCTURAL DESIGN** to provide the structural integrity of the structures against all interior or exterior factors which are possible weakening affects.
5. **ELECTRICAL DESIGN** for the mounting of the required Electrical and/or electronically installations to the structure.
6. **MECHANICAL DESIGN** for the required mounting installations to the structure.
7. **OTHER DESIGN** for all other required parts to the structure.
8. **DESIGN CONTRACT and DESIGN SCHEDULE** with its attachments.

B) CONSULTING Our Consulting Services are described as the full application of Project Management that we run on the site. In other words we do design as office works and Consulting Services as our site affairs. Our on-site Consulting Services are outlined in general as follows:

1. Preparing the **CONTRACT and SPECIFICATIONS** of the concerned job,
2. **COST ESTIMATE** and its permanent Control,
3. **WORK SCHEDULE** and its timely Control of every phase of application on electronic base (CPM/Primavera),
4. **QUALITY ASSURANCE AND QUALITY CONTROL (QA/QC)** through Inspections, Testing and Documentation of
 - a. Materials, Items,
 - b. Workmanship and
 - c. Methods of Applications,
5. Health and Security Engineering (HSE),
6. ADA Standards for Accessible Standards Design apply for new Constructions,
7. **CLAIM RESOLUTION**
8. **REPRESENTATIVE** of the Owner and/or Consulting Contracting Company.

We execute our consulting services on site as Project Management. The performance of Our Project Management Consulting Services is carried out as follows:

a. Inspection:

-General Inspections: It is held for general technical reasons due to standardization at the right time and according to the method as in the description of the inspection as shown in the contract, its annexes, in the specifications, standard-s or drawings.

All these general inspections will be applied as in the 3 Phase inspection with documentation on site as follows;

1. initial inspection: prior to the operation of the construction or other event
2. starting and finishing inspection: during the operation of construction or other event
3. inspection at the completion of the work: after the operation of construction or other event.

-Special inspections: It is held for specific technical reasons and performed conforming to the time and as in the description of the method of the specific inspection, as not shown in the contract, its annexes, in the specifications, standard-s or drawings, but it is agreed upon by parties to solve a problem or a claim arising newly on the site.

b. Tests: The tests on all disciplines shall be put in the contract specifications and note shall be included about their compulsory application on site.

The tests must conform to the ISO 9001:2000 (Q A/QC standards).

Application of Tests with Documentation on all the disciplines such as;

1. Ground,
2. Civil states,
3. Structural elements,
4. Electrical, Electronic and
5. Mechanical items and materials at necessary time and on related items,
6. Other pertinent tests on items and materials if required.



c. Documentation: Preparation of all documents prior to the pre-construction meeting and their filling up in a timely manner should be done.

The required documents are;

1. The contract of construction and its attachments to submit to the related parties for contract administration,
2. The specifications of the job covering all disciplines,
3. Material delivery submittal list as a spread sheet for review and approval or disapproval after the required review and inspection,
4. Cost estimate for the construction up to completion,
5. Construction work scheduling, and its follow ups on electronic base as Master Program,
6. Preparing budget and its follow ups on electronic base as Master Program,
7. All required blue prints, shop drawings and as-built data as Master Plan as it is also depicted in the design section, (All should comply with ASTM and ISO 9001:2000, ISO 14001:2004, OHSAS 18001:1999.)
8. Documentation due to Quality Assurance and Quality Control of workmanship, material, methods of application as in the form of three-phase inspection check-lists, and documents of all required tests for all disciplines, (All documentation should comply with ISO 9001:2000.)
9. Documents due to HSE,
10. Change Control and Modification proposal form,
11. Form for Claims,
12. Owner training and Orientation Forms
13. Pre-final and Final Acceptance Check Lists,
14. Operation and Maintenance Manuals.

YALCIN PROJECT is running on three main categories of construction jobs as; DESIGN, BUILD and GENERAL TRADE that we do the Design and Consulting Services and upon request we build the structures which we designed or others did. We can also do GENERAL TRADE as well.

We are very proud of our past experience and we are full of enthusiasm to reach to the utmost achievements in our fields of work as DESIGN, BUILD& CONSULTING SERVICES and we will do GENERAL TRADE for new projects in the future as well.

We are at your service on the contracting jobs for DESIGN, BUILD, CONSULTING SERVICES AND GENERAL TRADE as a Design, Build, Consulting Contracting- Subcontracting and Trade Company.

Hayati Yalcin
Civil Engineer
General Manager Partner and Founder

Sahsine Yalcin
Architect- Assistant to G.M.
Partner and Founder



DESIGN, BUILD & TRADE

WHERE THERE IS YALCIN PROJECT, THERE IS ALWAYS A RESOLUTION

ORGANIZATIONAL CHART OF YALCIN PROJECT DESIGN & CONSULTING COMPANY

HAYATİ YALÇIN
GENERAL MANAGER
CIVIL ENGINEER

ŞAHSİNE YALÇIN
ASSISTANT to GM
ARCHITECT

AYŞE UYSAL
FINANCIAL ADVISOR

TÜRKAN BİLGİN
CIVIL ENGINEER

HAMİD GOLBANDI
CIVIL ENGINEER (M.Sc)

MESUT TURAN
CIVIL ENGINEER

BANU KÜLCÜ
TECH. DRAFTSMAN

CEYLAN AĞIRMAN
TECH. DRAFTSMAN

BÜŞRA YAVUZ
TECH. DRAFTSMAN

MESUDE AĞIRMAN
EMPLOYEE

KUTAY BARLAS
IT ADVISOR



SOFTWARE USED FOR PROJECTION

- Etabs 9.7.4
- Etabs 2013
- Safe v12.3.1
- Sap2000
- Staad Pro v8
- Staad Foundation 5.3
- Ram Elements
- Ram Connection
- Ram Structural
- Ram Concrete
- Ram Consept
- Ram Frame
- Ram Steel
- Ram Foundation
- Lira Soft 9.4
- Ansteel
- Autocad 2014
- 3ds Max 2014
- Revit 2014
- Tekla Structures 19.1
- Nemetchek All Plan
- Beton Express
- Wood Exspress
- Frame 2D Express
- Fedra
- RW Cad
- Section Wizard
- Csi Col 8.4
- Probina Orion 14.1 - Eng
- Sta4 Cad
- G-Star iCad

COMPUTERS AND PLOTTERS IN COMPANY

- 1 HP Server&Back up Unit
- 1 IBM Server&Back up Unit
- 6 HP Touchsmart Computers
- 1 MacBook
- 2 MSI Laptop
- 5 Intel i7 Computers
- 1 HP T1200 Plotter
- 3 HP Printers



DESIGN, BUILD & TRADE

WHERE THERE IS YALCIN PROJECT, THERE IS ALWAYS A RESOLUTION

WORK GROUP



HAYATİ YALÇIN



ŞAHSİNE YALÇIN



TÜRKAN BİLGİN



HAMİD GOLBANDİ



MESUT TURAN



BANU KÜLCÜ



CEYLAN AĞIRMAN



KUTAY BARLAS



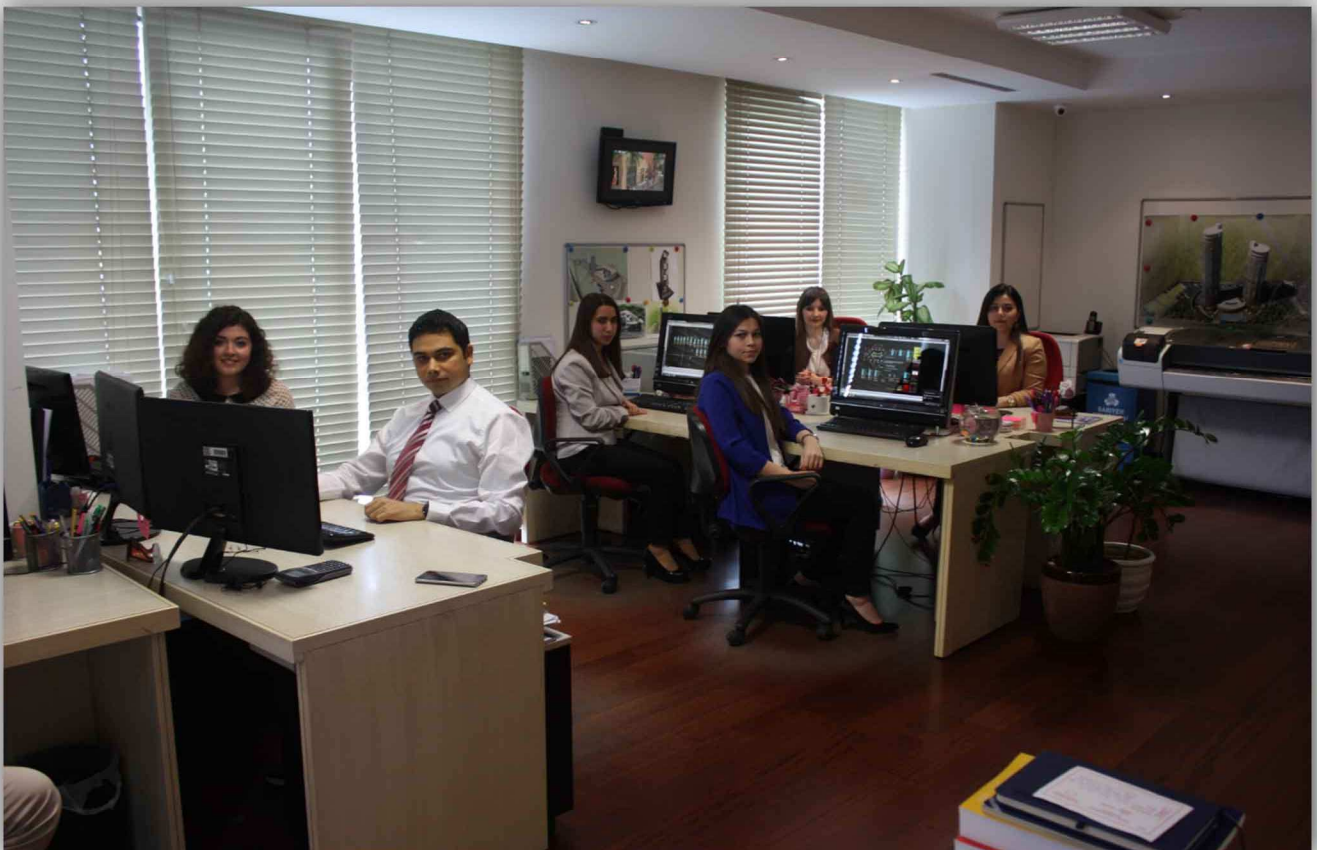
BÜŞRA YAVUZ



DESIGN, BUILD & TRADE

WHERE THERE IS YALCIN PROJECT, THERE IS ALWAYS A RESOLUTION

WORK GROUP





DESIGN, BUILD & TRADE

WHERE THERE IS YALCIN PROJECT, THERE IS ALWAYS A RESOLUTION

WORK GROUP





DESIGN, BUILD & TRADE

WHERE THERE IS YALCIN PROJECT, THERE IS ALWAYS A RESOLUTION

WORK GROUP





DESIGN, BUILD & TRADE

WHERE THERE IS YALCIN PROJECT, THERE IS ALWAYS A RESOLUTION

OUR MISSION

We aim at creating the best DESIGN that is well applicable and executing CONSULTING SERVICES as project management affairs on time, within the budget and with the utmost quality possible.

We have been obtaining our clients' contend that is why they have preferred us since 1994 when our company was established.

We would like to take your attention kindly on the main points and their details of the structures that we have accomplished. We hopefully acquire your intention to benefit from our DESIGN and CONSULTING SERVICES.

We run on our DESIGN,-CONSULTING SERVICES for the structures as Geotechnical Ground Survey and topographic drawings, High-Rise Buildings, Shopping Centers, Villa Housing, Gymnasium Halls, Industrial Buildings, Silos, High Chimneys, and Television Towers and the Infrastructures such as; foundations and all underground utilities as storm drain, sewer, domestic water lines, electric and telephone cables.

We continuously enrich the knowledge of our key personnel together with all our man power, our equipment and material and search for the last technical developments to share for our job.

We have gained a fame to be a trustful DESIGNER and a reliable CONSULTANT COMPANY in the eyes of our respectful clients.

We know well that the life of our company strictly depends upon the continuity of this trust and reliability.

YALCIN PROJECT COMPANY is determined to continue with carrying out its two functions as DESIGN and CONSULTING SERVICES to provide CLIENT satisfaction through the high quality of SERVICES it presents.

**DESIGN, BUILD & TRADE**

WHERE THERE IS YALCIN PROJECT, THERE IS ALWAYS A RESOLUTION

OUR PAST PERFORMANCE (GUARANTEES FUTURE PERFORMANCE)

<i>Project's Name</i>	<i>S. Type</i>	<i>Project's Location</i>	<i>Closed Area m²</i>	<i>Owner/Developer</i>
Acibadem Hospital Dept of Cancer	RC+Steel	Istanbul / Turkey	15.000m ²	Acibadem Saglik Co.
Adile Sadullah Mermerci Police Sch.	RC+Steel	Istanbul / Turkey	50.000 m ²	Turkish National Police
Agaoglu Dogu Atasehir Residence	RC+Steel	Istanbul / Turkey	80.000 m ² (53 Flats)	Agaoglu Co.
Algeria Constantine Project	RC+Steel	Istanbul / Turkey	235.000 m ²	MM Cons.
Anel Group Business Center	RC+Steel	Istanbul / Turkey	75.000m ²	Anel Co.
Ankara Clock Tower	RC+Steel	Ankara / Turkey	2.000 m ²	Ankara City Hall
Anthill Bomonti	RC+Steel	Istanbul / Turkey	163.000 m ² (65 Flats)	Ant Yapi Co.
Astana City Palace Trade Center	RC+Steel	Astana / Kazakhstan	125.000m ²	Astana Nedvijimost Co.
Azal Tower	RC+Steel	Azerbaijan / Baku	30.000 m ²	MNG Targem
Azerbaijan Quba Project	RC+Steel	Azerbaijan / Quba	56.000 m ²	Oney Architecture
Babello Fun Center,Cafe,Restaurant	RC+Steel	Dohuk / Iraq	10.000 m ²	Yorum - Betas Insaat
Bahcesehir Residences	RC+Steel	Istanbul / Turkey	30.000 m ²	Mim Yapi
Bayegan Steel Roof	Steel	Istanbul / Turkey	2.000 m ²	Bayegan Co.
Beko Technical Factory Projects	RC+Steel	Istanbul / Turkey	10.000 m ²	Garanti Koza Co.
Blumar Atakoy	RC+Steel	Istanbul / Turkey	225.000 m ²	MM Project Co.
Bodrum Adabuku Project	RC+Steel	Mugla / Turkey	25.000 m ²	MM Project Co.
Bodrum Dogabuku Boutiuque Holiday Villas	RC+Steel	Mugla / Turkey	18.000 m ²	MM Project Co.
Bomonti Business Center	RC+Steel	Istanbul / Turkey	22.000 m ²	Pak Holding
Camlica Hotel	RC+Steel	Istanbul / Turkey	20.000 m ²	Ceylan Holding
Camlica Villas	RC+Steel	Istanbul / Turkey	10.000m ²	MM Project Co.
Cevahir Holding Office Building	RC+Steel	Istanbul / Turkey	28.000 m ²	Cevahir Holding Co.
Ciragan Volvo	RC+Steel	Istanbul / Turkey	1000m ²	Ciragan Volvo Co.
Colakoglu Company Office Building	RC+Steel	Istanbul / Turkey	30.000 m ²	Colakoglu Co.
D. Akter Hotel and Residence	RC+Steel	Yalta / Ukraine	30.000 m ²	D.Akter Co.
Derbent Koru Villas	RC+Steel	Istanbul / Turkey	5.000 m ²	Pedas Yapi Co.
Dohuk Mall and Residences	RC+Steel	Dohuk / Iraq	240.000 m ²	MM Project Co.
Erbil Hypermarket	Steel	Erbil / Iraq	18.000 m ²	Yorum Insaat
Erbil Residences	RC+Steel	Erbil / Iraq	100.000 m ²	MM Project Co.
Erkan Ins. Altunizade Villas	RC+Steel	Istanbul / Turkey	12.000 m ²	Erkan Insaat
Erkan Ins. Istinye Villas	RC+Steel	Istanbul / Turkey	10.000 m ²	Erkan Insaat
Forestry Industrial Plants	RC+Steel	Bursa / Turkey	25.000 m ²	Garanti Koza Co.
Forum Almaty Mall	RC+Steel	Almaty / Kazakhstan	155.000 m ²	Nova Sultani
Forum Antalya Mall	RC+Steel	Antalya / Turkey	367.000m ²	MultiTurkmall
Forum Camlik Mall	RC+Steel	Denizli / Turkey	80.000m ²	MultiTurkmall
Forum Gaziantep Mall	RC+Steel	Gaziantep / Turkey	105.000m ²	MultiTurkmall
Forum Istanbul Mall Cinema Steel Structure	RC+Steel	Istanbul / Turkey	5.000 m ²	MultiTurkmall
Forum Mersin Mall	RC+Steel	Mersin / Turkey	170.000m ²	MultiTurkmall
Forum Tem Mall	RC+Steel	Istanbul / Turkey	240.000 m ²	MultiTurkmall
Gayrettepe Residences	RC+Steel	Istanbul / Turkey	15.000m ²	MM Project Co.
Gordion Cayyolu Mall	RC+Steel	Ankara / Turkey	175.000m ²	Redevco Co.
Grand Pera	RC+Steel	Istanbul / Turkey	30.000 m ²	Kamer Insaat
Hotel Kirim Riviera	RC+Steel	Alushta / Ukraine	28.000 m ²	Radisson SAS
Ikbal Business Center	RC+Steel	Istanbul / Turkey	13.000 m ²	Erkan Insaat
Kemer Country Golf Club	RC+Steel	Istanbul / Turkey	20.000m ²	Kemer Yapi Co.
Kemer Resort Hotel	RC+Steel	Antalya / Turkey	28.000 m ²	Buyukhanli Insaat Co.
Kemiteks Co. Chemistry Factory	RC+Steel	Istanbul / Turkey	26.000 m ²	Kemiteks Co.
Kilyos Police Collage	RC+Steel	Istanbul / Turkey	50.000 m ²	M. Ata Mermerci V.
Konut Birlik Yapi Cooperative	RC+Steel	Istanbul / Turkey	35.000 m ²	Konut Birlik Yapi Coop.

**DESIGN, BUILD & TRADE**

WHERE THERE IS YALCIN PROJECT, THERE IS ALWAYS A RESOLUTION

OUR PAST PERFORMANCE (GUARANTEES FUTURE PERFORMANCE)

<i>Project's Name</i>	<i>S. Type</i>	<i>Project's Location</i>	<i>Closed Area m²</i>	<i>Owner/Developer</i>
Konya-Akşehir City Hall Building	RC+Steel	Konya / Turkey	10.000 m ²	Akşehir City Hall
Kuzguncuk Steel Project	Steel	Istanbul / Turkey	2.000 m ²	MM Project Co.
Levent Loft 2 Project St. Dan.	RC+Steel	Istanbul / Turkey	24.000 m ²	Akfen Holding
Louise Ankara	RC+Steel	Ankara / Turkey	3.000 m ²	IPD Architecture
Marmara Tower	RC+Steel	Istanbul / Turkey	30.000 m ²	Giz Auto
Marmaris Yacht Port	RC+Steel	Mugla / Turkey	20.000 m ²	Net Holding
Mashattan Residences	RC+Steel	Istanbul / Turkey	450.000m ² (45 Flats)	Tas Yapi & MM Project
Maslak Business Center	RC+Steel	Istanbul / Turkey	24.000 m ²	Pak Holding
Mim.Sedat Hakkı Eldem Hidiv Kasri Villas	RC+Steel	Istanbul / Turkey	35.000 m ²	-
Moda Steel Project	Steel	Istanbul / Turkey	2.000 m ²	MM Project Co.
MTK Otel and Office Center	RC+Steel	Izmir / Turkey	300.000 m ² (45 Flats)	MTK Co.
Nef Gokturk Residences	RC+Steel	Istanbul / Turkey	23.000 m ²	Timur Yapi Co.
Neuropsychiatry Center	RC+Steel	Istanbul / Turkey	30.000 m ²	MM Project Co.
Oil and Food Factories	RC+Steel	Diyarbakir / Turkey	30.000 m ²	Toprak Holding
Opel Automotive Factory	RC+Steel	Izmir / Turkey	10.000 m ²	Opel
Ozak GYO Hayat Tepe Steel Str.	Steel	Istanbul / Turkey	2.000 m ²	Ozak GYO
Pak Holding Camlica Villas	RC+Steel	Istanbul / Turkey	15.000+10.000 m ²	Pak Holding
Park Plaza Business Center	RC+Steel	Istanbul / Turkey	40.000m ² (40 Flats)	Inco Insaat Co.
Pedas Yapi Cooperative	RC+Steel	Istanbul / Turkey	40.000 m ²	Pedas Yapi Co.
Pinar Kent Residences	RC+Steel	Istanbul / Turkey	35.000 m ²	Pinar Kent
Pisak Home Project	Steel	Istanbul / Turkey	2.000 m ²	Mehves-Iskender PISAK
Prestij Insaat 22 Villas	RC+Steel	Istanbul / Turkey	26.000 m ²	Prestij Co.
Proma Hotel & Mall	RC+Steel	Tahran / Iran	70.000 m ²	Proma & Yimpas
Promat Printing Facilities	RC+Steel	Istanbul / Turkey	20.000m ²	Promat Printing Co.
Quantum Hotel	RC+Steel	Istanbul / Turkey	24.000m ²	Scooter Co.
Regional Schools	RC+Steel	Turkey	Type 480 People, Type2 960 People	Yildiz Technical, Gazi ,Istanbul Technical Uni.
Sanovel	RC+Steel	Istanbul / Turkey	30.000 m ²	Sanovel
Sapanca Villas	RC+Steel	Adapazari / Turkey	35.000 m ²	-
Segatech Office Building	RC+Steel	Istanbul / Turkey	2.000 m ²	Segatech
Sel Hortumlari Steel Roof	Steel	Istanbul / Turkey	2.000 m ²	Keten Insaat
Tan Tourism Building	RC+Steel	Istanbul / Turkey	20.000 m ²	Net Holding
Tekofax Ulasli School Building	RC+Steel	Istanbul / Turkey	15.000 m ²	Tekofax Co.
Terrace Tema Residence	RC+Steel	Istanbul / Turkey	75.000 m ²	Inanlar Insaat Co.
The Golden Holiday Thermal Hotel	RC+Steel	Bursa / Turkey	20.000 m ²	Oytas Insaat Co.
Tokat Mall	RC+Steel	Tokat / Turkey	80.000 m ²	Nova Sultani
Topkapi Business Center	RC+Steel	Istanbul / Turkey	15.000 m ²	Prestij Co.
Topkapi Textile Factory	RC+Steel	Istanbul / Turkey	13.000 m ²	Topkapi Textile Factory
Toprak Bank Gen.Man. Building	RC+Steel	Istanbul / Turkey	30.000 m ²	Toprak Holding
Toros Tarim Adana Agri Park	RC+Steel	Adana / Turkey	4.000 m ²	Tekfen
Turquase Resort Village	RC+Steel	Marmaris / Turkey	10.000 m ²	-
Umraniye City Hall Building	RC+Steel	Istanbul / Turkey	29.000 m ²	Umraniye City Hall
Umraniye Mosque Project	RC+Steel	Istanbul / Turkey	8.000 m ²	MM Project Co.
Veka Insaat Textile Factory	RC+Steel	Istanbul / Turkey	6.000 m ²	Veka Insaat
VIP Villas	RC+Steel	Sofia / Bulgaria	15.000m ²	MM Project Co.
Vural Kent (Country)	RC+Steel	Istanbul / Turkey	64.000 m ²	Vural Kent
Yazicioglu Apartment	RC+Steel	Istanbul / Turkey	4.000 m ²	Turkuaz Life
Yenibosna Office Building	RC+Steel	Istanbul / Turkey	28.000 m ²	Pekar Co.
Zeytinburnu Demirciler Site	RC+Steel	Istanbul / Turkey	10.000 m ²	-



DESIGN, BUILD & TRADE

WHERE THERE IS YALCIN PROJECT, THERE IS ALWAYS A RESOLUTION

Mashattan Residences Istanbul / Turkey



Project's Name
Mashattan Residences

Project's Location
Istanbul / Turkey

Closed Area (m²)
450.000 (45 Flats)

Owner/Developer
Taş Yapı & MM Proje



DESIGN, BUILD & TRADE

WHERE THERE IS YALCIN PROJECT, THERE IS ALWAYS A RESOLUTION

Forum Mersin Mall Mersin / Turkey



Project's Name Forum Mersin Mall	Project's Location Mersin / Turkey	Closed Area (m ²) 170.000	Owner/Developer MultiTurkmall
-------------------------------------	---------------------------------------	--	----------------------------------



DESIGN, BUILD & TRADE

WHERE THERE IS YALCIN PROJECT, THERE IS ALWAYS A RESOLUTION

Forum Camlik Mall Istanbul / Turkey



Project's Name Forum Camlik Mall	Project's Location Istanbul / Turkey	Closed Area (m ²) 80.000	Owner/Developer MultiTurkmall
-------------------------------------	---	---	----------------------------------



DESIGN, BUILD & TRADE

WHERE THERE IS YALCIN PROJECT, THERE IS ALWAYS A RESOLUTION

Gordion Cayyolu Mall Ankara / Turkey



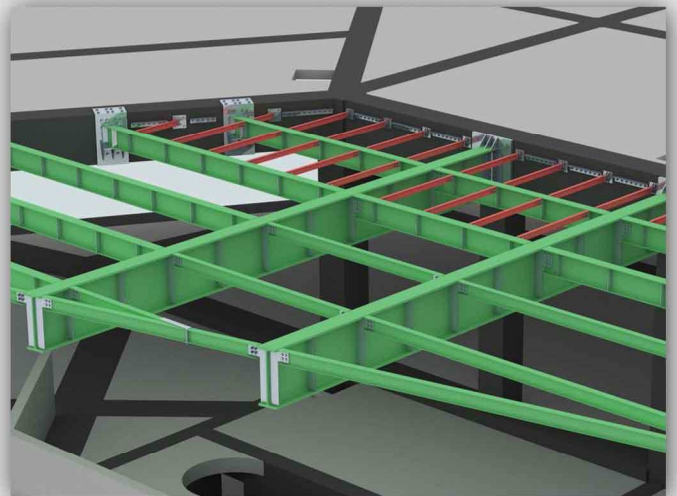
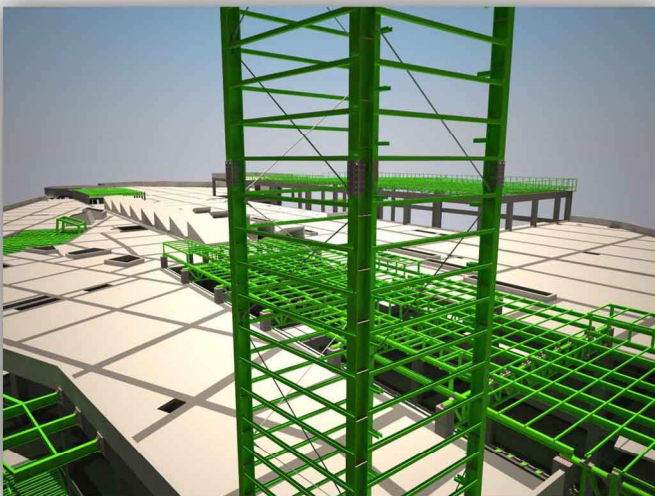
Project's Name Gordion Cayyolu Mall	Project's Location Ankara / Turkey	Closed Area (m ²) 175.000	Owner/Developer Redevco Co.
--	---------------------------------------	--	--------------------------------



DESIGN, BUILD & TRADE

WHERE THERE IS YALCIN PROJECT, THERE IS ALWAYS A RESOLUTION

Forum Gaziantep Mall Gaziantep / Turkey



Project's Name
Forum Gaziantep Mall

Project's Location
Gaziantep / Turkey

Closed Area (m²)
105.000

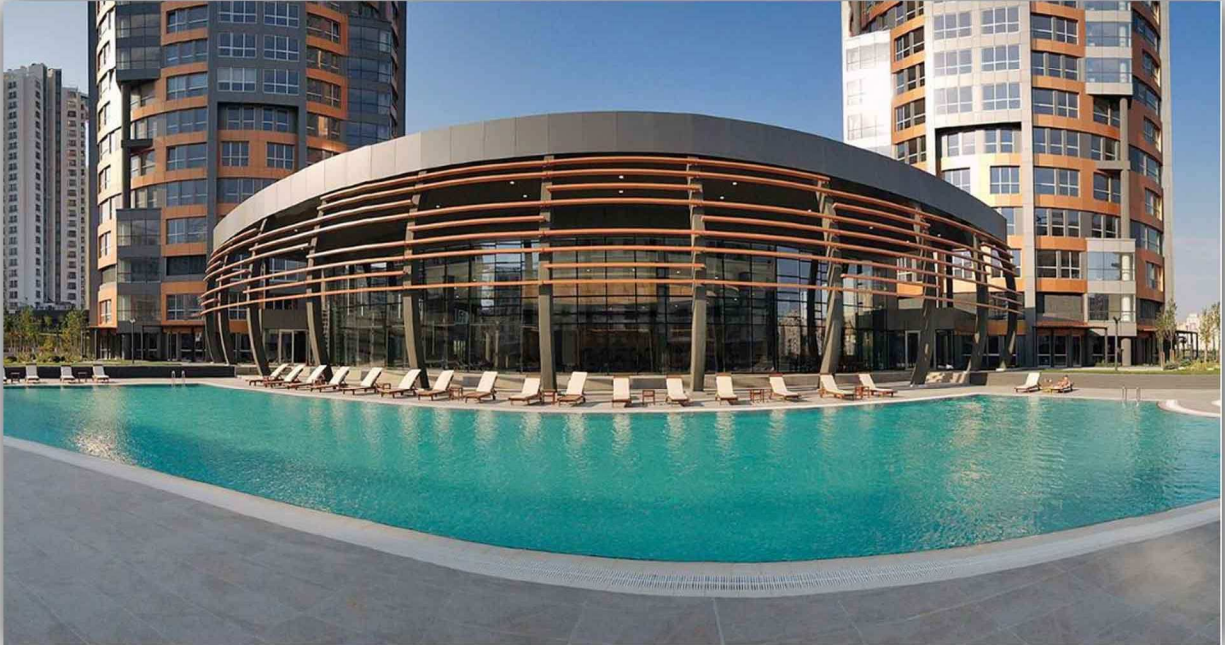
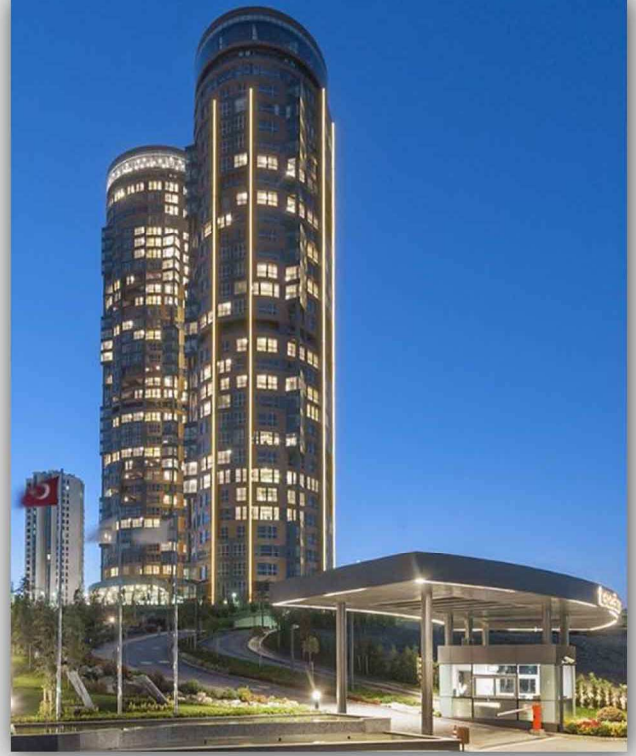
Owner/Developer
MultiTurkmall



DESIGN, BUILD & TRADE

WHERE THERE IS YALCIN PROJECT, THERE IS ALWAYS A RESOLUTION

Terrace Tema Residence Istanbul / Turkey



Project's Name
Terrace Tema Residence

Project's Location
Istanbul / Turkey

Closed Area (m²)
75.000 (45 Flats)

Owner/Developer
Inanlar Insaat



DESIGN, BUILD & TRADE

WHERE THERE IS YALCIN PROJECT, THERE IS ALWAYS A RESOLUTION

Anel Group Business Center Istanbul / Turkey



Project's Name
Anel Group Business Center

Project's Location
Istanbul / Turkey

Closed Area (m²)
75.000

Owner/Developer
Anel Co.



DESIGN, BUILD & TRADE

WHERE THERE IS YALCIN PROJECT, THERE IS ALWAYS A RESOLUTION

Forum Antalya Mall Antalya / Turkey



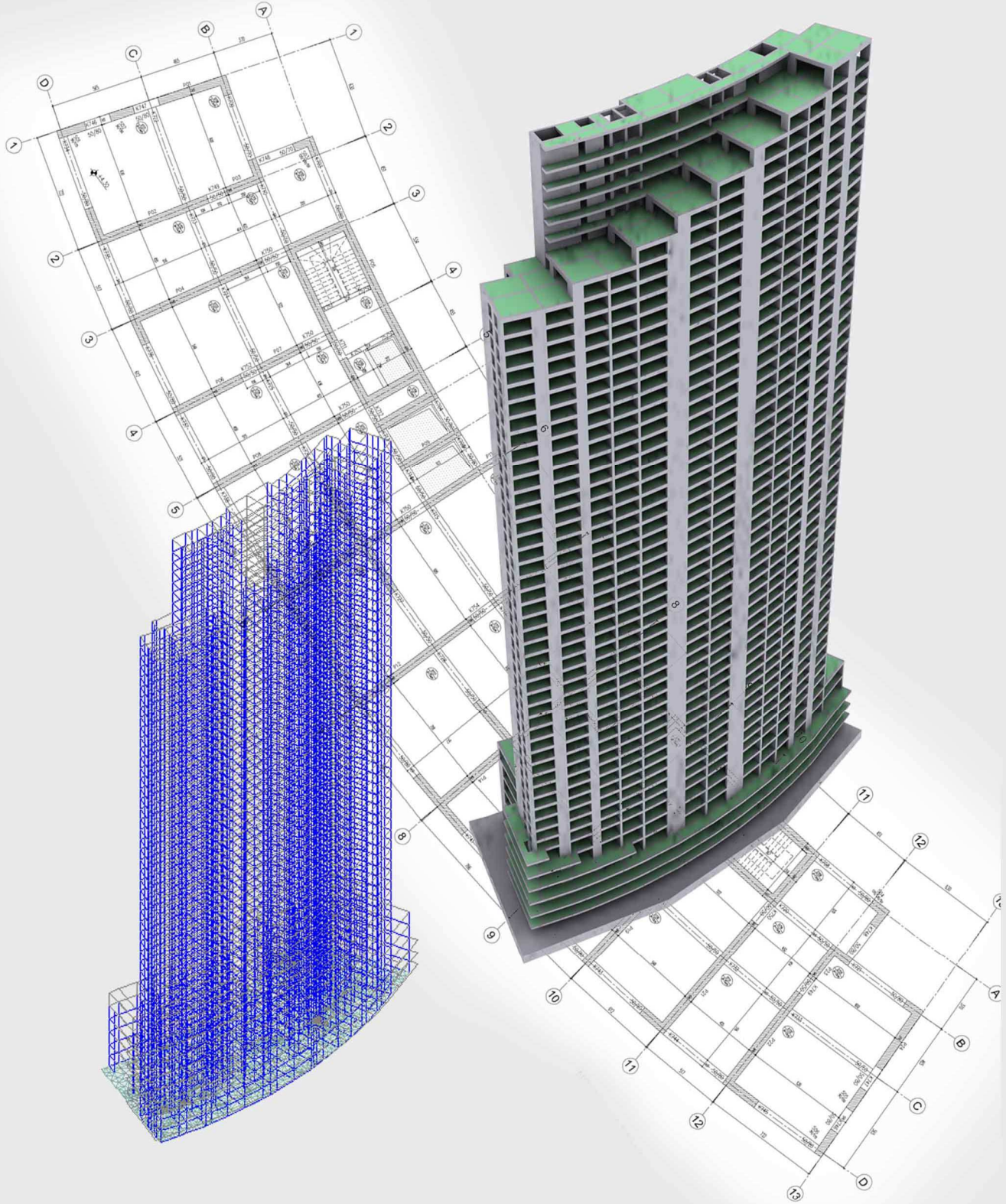
Project's Name Forum Antalya Mall	Project's Location Antalya / Turkey	Closed Area (m ²) 367.000	Owner/Developer MultiTurkmall
--------------------------------------	--	--	----------------------------------



DESIGN, BUILD & TRADE

WHERE THERE IS YALCIN PROJECT, THERE IS ALWAYS A RESOLUTION

Agaoglu Dogu Atasehir Residence Istanbul / Turkey



Project's Name
Agaoglu D. Atasehir Residence

Project's Location
Istanbul / Turkey

Closed Area (m²)
80.000 (53 Flats)

Owner/Developer
Agaoglu Co.



DESIGN, BUILD & TRADE

WHERE THERE IS YALCIN PROJECT, THERE IS ALWAYS A RESOLUTION

Anthill Bomonti Residence Istanbul / Turkey

TÜRK MÜHENDİS VE MİMAR ODALARI BİRLİĞİ
İNŞAAT MÜHENDİSLERİ ODASI
İSTANBUL ŞUBESİ

Sayı :34.11183
Konu :Sicil Durum Belgesi 26.12.2007

ŞİŞLİ BELEDİYE BAŞKANLIĞI

STATİK PROJE MÜELLİFİ SİCİL DURUM BELGESİ

Proje Müellifi'nin
Adı Soyadı :HAYATI YALÇIN
Oda Sicil No :38544
Tc Kimlik No :11566397362
Bitirdiği Okul ve Yıl :İSTANBUL TEKNİK ÜNİVERSİTESİ / 1990
İşyeri Tescil No :3704
İşyeri Adı :YALÇIN PROJE MÜH. MİM. MÜŞ. TAAH. SAN. VE TİC. LTD. ŞTİ.
İşyeri Adresi :KURUÇESME CAD. NO:142 ATADAN YALISI KURUÇESME BEŞİKTAŞ/İSTANBUL

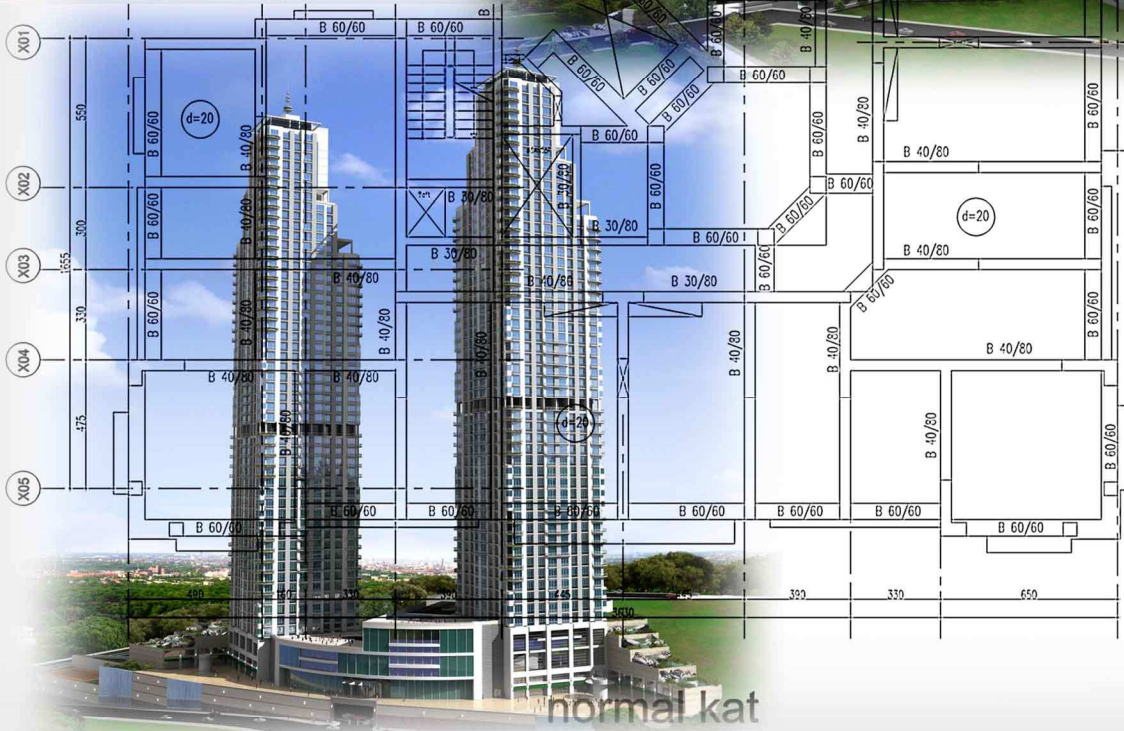
Yukarıda kimliği yazılı üyemizin 6235 (7303) Sayılı TMMOB Kanunu ve 3458 Sayılı Mühendislik Mimarlık Hakında Kanun ile TMMOB İnşaat Mühendisleri Odası Yönetmelikleri uyarınca statik proje müellifliği hizmeti vermesine engel disiplin cezası bulunmamaktadır.
İşbu belge 3194 Sayılı İmar Kanunu, eki Tip İmar Yönetmeliği, 4708 Sayılı Yapı Denetimi Hakında Kanun ve Uygulama Usul ve Esasları Yönetmeliği gereğince aşağıda parça, ada, parsel no'ları yazılı yapılan statik proje müellifliği hizmetleri için verilmiştir.

Arsanın
Mal Sahibi :ANT YAPI SAN.TİC.LTD.ŞTİ.
CPK SAN.TİC.VE TURZ.LTD.Ş
İli :İSTANBUL
İlçesi :ŞİŞLİ
Belediyesi :ŞİŞLİ BELEDİYESİ
Mahallesi :CUMHURİYET
Sokak :
Pafta :144
Ada :994
Parsel :53

Projenin
Kullanım Amacı :Çarşı + Rezidans
Blok Adedi :1
Blok Yapı Alanı :163039
Kat Adedi :51
Tasviye Sistemi Yapısı :Betonarme
Yapı Grubu :A Grubu
Yapı Sınıfı :IV. Sınıf
Proje Niteliği :Yeni Proje
Toplam İnşaat Alanı :163039 m²
Yapı Denetim Kuruluşu :

İş bu belge orijinal olması halinde geçerlidir. Aksi halde geçerli değildir. Kayıtlarımızda Üye'nin herhangi bir Disiplin Cezasına rastlanmamıştır. Üyemizin 26.12.2007 itibarıyla aldat borcu bulunmamaktadır. Saygılarımızla

Halaskargazi Cad. No: 35/1 Harbiye 34373 İSTANBUL Tel: (0 212) 246 38 42 - 247 96 57 - 219 99 62 - 219 99 63
Faks: (0 212) 232 09 12 • www.moiistanbul.org.tr • E-posta: imo@moiistanbul.org.tr



normal kat

Project's Name
Anthill Bomonti Residence

Project's Location
Istanbul / Turkey

Closed Area (m²)
163.000 (65 Flats)

Owner/Developer
Ant Yapı Co.



DESIGN, BUILD & TRADE

WHERE THERE IS YALCIN PROJECT, THERE IS ALWAYS A RESOLUTION

Yenibosna Office Building Istanbul / Turkey



Project's Name
Yenibosna Office Building

Project's Location
Istanbul / Turkey

Closed Area (m²)
28.000

Owner/Developer
Pekar Co.



DESIGN, BUILD & TRADE

WHERE THERE IS YALCIN PROJECT, THERE IS ALWAYS A RESOLUTION

Cevahir Holding Office Building Istanbul / Turkey



Project's Name Cevahir Holding Office Building	Project's Location Istanbul / Turkey	Closed Area (m ²) 28.000 (14 Flats)	Owner/Developer Cevahir Holding Co.
---	---	--	--



DESIGN, BUILD & TRADE

WHERE THERE IS YALCIN PROJECT, THERE IS ALWAYS A RESOLUTION

Nef Gokturk Residences Istanbul / Turkey



Project's Name
Nef Gokturk Residences

Project's Location
Istanbul / Turkey

Closed Area (m²)
23.000 (9 Flats)

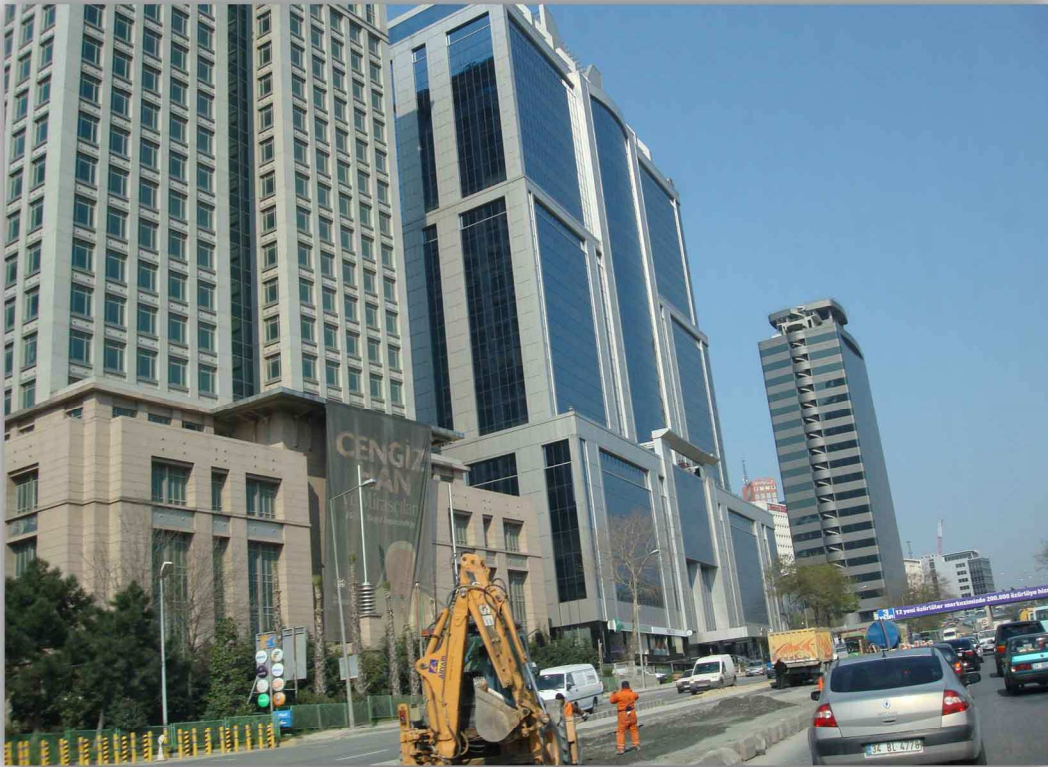
Owner/Developer
Timur Yapı Co.



DESIGN, BUILD & TRADE

WHERE THERE IS YALCIN PROJECT, THERE IS ALWAYS A RESOLUTION

Park Plaza Business Center Istanbul / Turkey



Project's Name
Park Plaza Business Center

Project's Location
Istanbul / Turkey

Closed Area (m²)
40.000 (40 Flats)

Owner/Developer
Inco Insaat Co.



DESIGN, BUILD & TRADE

WHERE THERE IS YALCIN PROJECT, THERE IS ALWAYS A RESOLUTION

Umraniye Mosque Project Istanbul / Turkey



Project's Name
Umraniye Mosque Project

Project's Location
Istanbul / Turkey

Closed Area (m²)
8.000

Owner/Developer
MM Proje Co.



DESIGN, BUILD & TRADE

WHERE THERE IS YALCIN PROJECT, THERE IS ALWAYS A RESOLUTION

Acibadem Hospital Dept of Cancer Istanbul / Turkey



Project's Name Acibadem Hospital	Project's Location Istanbul / Turkey	Closed Area (m ²) 15.000	Owner/Developer Acibadem Saglik Co.
-------------------------------------	---	---	--



DESIGN, BUILD & TRADE

WHERE THERE IS YALCIN PROJECT, THERE IS ALWAYS A RESOLUTION

Toprak Bank Gen. Man. Building Istanbul / Turkey



Project's Name
Toprak Bank Gen.Man. Building

Project's Location
Istanbul / Turkey

Closed Area (m²)
30.000

Owner/Developer
Toprak Holding Co.



DESIGN, BUILD & TRADE

WHERE THERE IS YALCIN PROJECT, THERE IS ALWAYS A RESOLUTION

Sanovel Istanbul / Turkey



Project's Name Sanovel	Project's Location Istanbul / Turkey	Closed Area (m ²) 30.000	Owner/Developer Sanovel Co.
---------------------------	---	---	--------------------------------



DESIGN, BUILD & TRADE

WHERE THERE IS YALCIN PROJECT, THERE IS ALWAYS A RESOLUTION

Promat Printing Facilities Istanbul / Turkey



Project's Name Promat Printing Facilities	Project's Location Istanbul / Turkey	Closed Area (m ²) 20.000	Owner/Developer Promat Matbaacılık Co.
--	---	---	---



DESIGN, BUILD & TRADE

WHERE THERE IS YALCIN PROJECT, THERE IS ALWAYS A RESOLUTION

Quantum Hotel Istanbul / Turkey



Project's Name
Quantum Hotel

Project's Location
Istanbul / Turkey

Closed Area (m²)
24.000

Owner/Developer
Scooter Co.



DESIGN, BUILD & TRADE

WHERE THERE IS YALCIN PROJECT, THERE IS ALWAYS A RESOLUTION

Umraniye City Hall Building Istanbul / Turkey



Project's Name	Project's Location	Closed Area (m ²)	Owner/Developer
Umraniye City Hall Building	Istanbul / Turkey	30.000	Umraniye City Hall



DESIGN, BUILD & TRADE

WHERE THERE IS YALCIN PROJECT, THERE IS ALWAYS A RESOLUTION

Marmara Tower Istanbul / Turkey



Project's Name
Marmara Tower

Project's Location
Istanbul / Turkey

Closed Area (m²)
30.000

Owner/Developer
Gizer-Isik-Cons.



DESIGN, BUILD & TRADE

WHERE THERE IS YALCIN PROJECT, THERE IS ALWAYS A RESOLUTION

Tokat Mall Tokat / Turkey



Project's Name
Tokat Mall

Project's Location
Tokat / Turkey

Closed Area (m²)
80.000

Owner/Developer
Nova Sultani



DESIGN, BUILD & TRADE

WHERE THERE IS YALCIN PROJECT, THERE IS ALWAYS A RESOLUTION

Bahcesehir Residences Istanbul / Turkey



Project's Name
Bahcesehir Residences

Project's Location
Istanbul / Turkey

Closed Area (m²)
30.000

Owner/Developer
Mim Yapı



DESIGN, BUILD & TRADE

WHERE THERE IS YALCIN PROJECT, THERE IS ALWAYS A RESOLUTION

Blumar Atakoy Istanbul / Turkey



Project's Name
Blumar Atakoy

Project's Location
Istanbul / Turkey

Closed Area (m²)
225.000

Owner/Developer
MM Proje Co.



DESIGN, BUILD & TRADE

WHERE THERE IS YALCIN PROJECT, THERE IS ALWAYS A RESOLUTION

Grand Pera Taksim Istanbul / Turkey



Project's Name Grand Pera Taksim	Project's Location Istanbul / Turkey	Closed Area (m ²) 30.000	Owner/Developer Kamer Insaat
-------------------------------------	---	---	---------------------------------



DESIGN, BUILD & TRADE

WHERE THERE IS YALCIN PROJECT, THERE IS ALWAYS A RESOLUTION

D. Akter Hotel and Residences Yalta / Ukraine



Project's Name
D.Akter Hotel and Residences

Project's Location
Yalta / Ukraine

Closed Area (m²)
30.000

Owner/Developer
D.Akter Co.



DESIGN, BUILD & TRADE

WHERE THERE IS YALCIN PROJECT, THERE IS ALWAYS A RESOLUTION

City Palace Trade Center Astana / Kazakhstan



Project's Name
Astana Trade Center

Project's Location
Astana / Kazakhstan

Closed Area (m²)
125.000

Owner/Developer
Astana Nedvijimost Co.



DESIGN, BUILD & TRADE

WHERE THERE IS YALCIN PROJECT, THERE IS ALWAYS A RESOLUTION

Azerbaijan Quba Project Quba / Azerbaijan



Project's Name
Azerbaijan Quba Project

Project's Location
Quba / Azerbaijan

Closed Area (m²)
56.000

Owner/Developer
Oney Architecture



DESIGN, BUILD & TRADE

WHERE THERE IS YALCIN PROJECT, THERE IS ALWAYS A RESOLUTION

Prima Hotel & Mall Tahran / Iran



HOTEL MARKET & SHOPPING CENTER



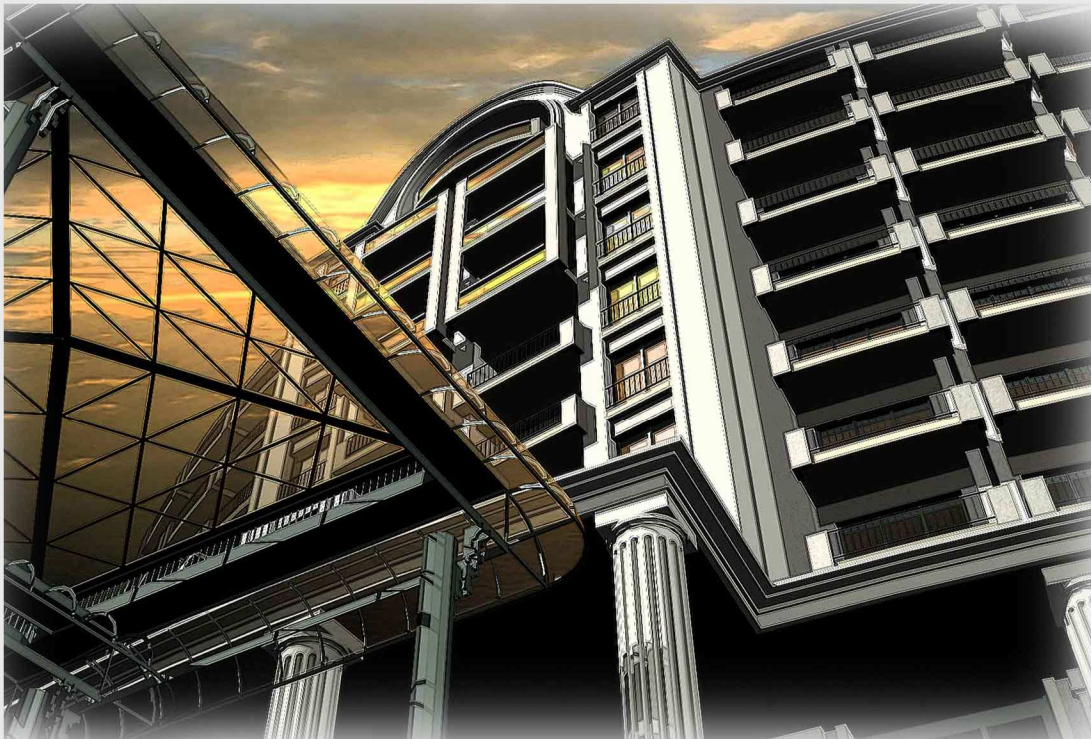
Project's Name Prima Hotel & Mall	Project's Location Tahran / Iran	Closed Area (m ²) 70.000	Owner/Developer Prima & Yimpas
--------------------------------------	-------------------------------------	---	-----------------------------------



DESIGN, BUILD & TRADE

WHERE THERE IS YALCIN PROJECT, THERE IS ALWAYS A RESOLUTION

Hotel Kırım Riviera Alushta / Ukraine



Project's Name Hotel Kırım Riviera	Project's Location Alushta / Ukraine	Closed Area (m ²) 28.000	Owner/Developer Radisson SAS
---------------------------------------	---	---	---------------------------------



DESIGN, BUILD & TRADE

WHERE THERE IS YALCIN PROJECT, THERE IS ALWAYS A RESOLUTION

Dohuk Mall and Residences Dohuk / Iraq



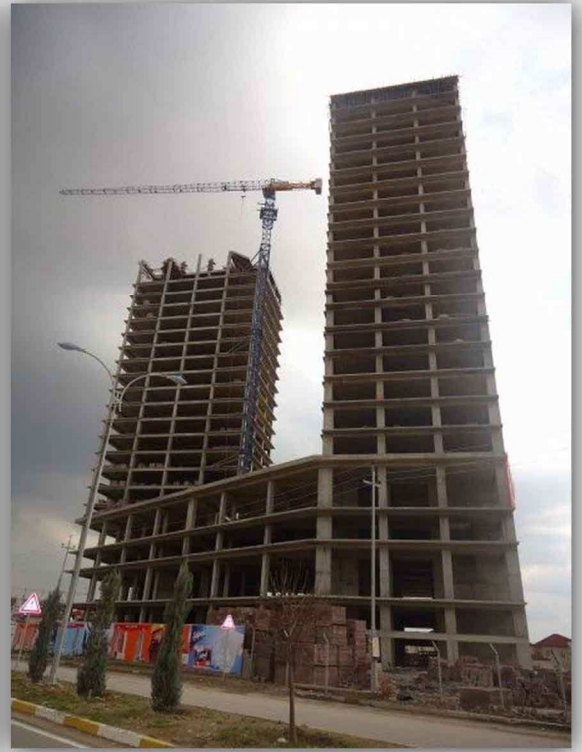
Project's Name Dohuk Mall and Residences	Project's Location Dohuk / Iraq	Closed Area (m ²) 240.000	Owner/Developer MM Project Co.
---	------------------------------------	--	-----------------------------------



DESIGN, BUILD & TRADE

WHERE THERE IS YALCIN PROJECT, THERE IS ALWAYS A RESOLUTION

Erbil Residences Erbil / Iraq



Project's Name Erbil Residences	Project's Location Erbil / Iraq	Closed Area (m ²) 100.000	Owner/Developer MM Project Co.
------------------------------------	------------------------------------	--	-----------------------------------



DESIGN, BUILD & TRADE

WHERE THERE IS YALCIN PROJECT, THERE IS ALWAYS A RESOLUTION

Babello Fun Center, Cafe, Restaurant Dohuk / Iraq



Project's Name Babello	Project's Location Dohuk / Iraq	Closed Area (m ²) 10.000	Owner/Developer Yorum-Betas Cons.
---------------------------	------------------------------------	---	--------------------------------------



DESIGN, BUILD & TRADE

WHERE THERE IS YALCIN PROJECT, THERE IS ALWAYS A RESOLUTION

Forum Almaty Mall Almaty / Kazakhstan



Project's Name
Forum Almaty Mall

Project's Location
Almaty / Kazakhstan

Closed Area (m²)
155.000

Owner/Developer
Nova Sultani



DESIGN, BUILD & TRADE

WHERE THERE IS YALCIN PROJECT, THERE IS ALWAYS A RESOLUTION

Azal Tower Baku / Azerbaijan



Project's Name
Azal Tower

Project's Location
Baku / Azerbaijan

Closed Area (m²)
30.000

Owner/Developer
MNG Targem



DESIGN, BUILD & TRADE

WHERE THERE IS YALCIN PROJECT, THERE IS ALWAYS A RESOLUTION

Azal Tower Baku / Azerbaijan



Project's Name
Tempoint

Project's Location
Istanbul / Turkey

Closed Area (m²)
318.920

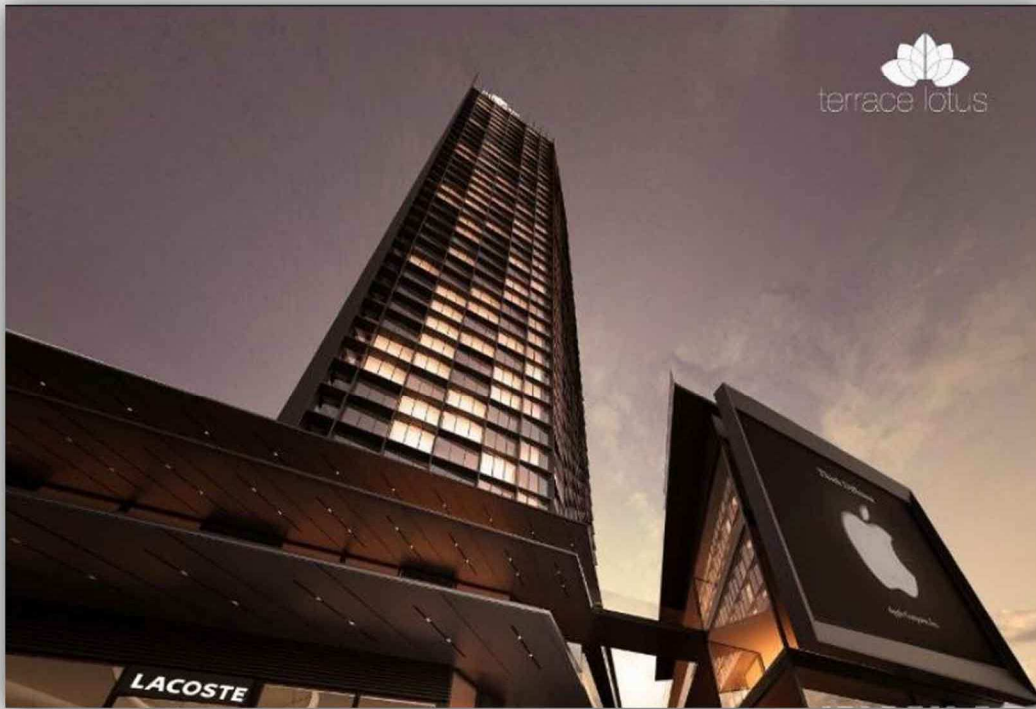
Owner/Developer
Gül Proje Nata



DESIGN, BUILD & TRADE

WHERE THERE IS YALCIN PROJECT, THERE IS ALWAYS A RESOLUTION

Terrace Lotus Istanbul / Tukey



Project's Name Terrace Lotus	Project's Location Istanbul / Turkey	Closed Area (m ²) 57.464 (43 Kat)	Owner/Developer İnanlar
---------------------------------	---	--	----------------------------



DESIGN, BUILD & TRADE

WHERE THERE IS YALCIN PROJECT, THERE IS ALWAYS A RESOLUTION

Novada Ordu Ordu / Tukey



Project's Name Novada Ordu	Project's Location Ordu / Turkey	Closed Area (m ²) 16.240 (6 Kat)	Owner/Developer Novada Sultani
-------------------------------	-------------------------------------	---	-----------------------------------



DESIGN, BUILD & TRADE

WHERE THERE IS YALCIN PROJECT, THERE IS ALWAYS A RESOLUTION

CERTIFICATES

COMPUTERS & ENGINEERING
Mühendislik Yazılımları Danışma ve Sağlama Merkezi

Sertifika

Bu sertifika
YALÇIN PROJE Müh. Mim. Müş. Taah. Ltd. Şti.
Maslak Mah. Akasya Sok. No:2, Mashattan A5 Blok kat:4 No:4
Maslak - Şişli - İstanbul
İsimli kuruluşun aşağıdaki programların lisanslı kullanıcıları
olduklarını belgelemek amacıyla verilmiştir.

Yazılım:
ETABS v9.7 Nonlinear
SAP2000 v15 Advanced
SAFE v12
CSI COL v8.4

Suat Bager
İng. Yük. Müh.
Gen. Md.

COMPUTERS & ENGINEERING
SOFTWARE & CONSULTING

COMPUTERS & ENGINEERING
Holzmühler Weg 87-89 D-35457 Lollar - Germany
Tel: 0049 6406 73697 Fax: 0049 6406 4745
E-mail: bager@comp-engineering.com www.comp-engineering.com

COMPUTERS & ENGINEERING bu yazılımları Almanya ve Türkiye distribütörüdür.

СИСТЕМА СЕРТИФИКАЦИИ ГОСТ Р
ФЕДЕРАЛЬНОЕ АГЕНТСТВО ПО ТЕХНИЧЕСКОМУ РЕГУЛИРОВАНИЮ И МЕТРОЛОГИИ

СЕРТИФИКАТ СООТВЕТСТВИЯ

№ РОСС US.CPI15.H00590
Срок действия с 01.03.2013 по 28.02.2015
№ 0896145

ОРГАН ПО СЕРТИФИКАЦИИ РОСС RU.0001.11СП15

ООО ЦСПС. Орган по сертификации программной продукции в строительстве
125057, г. Москва, Ленинградский просп., д. 63, тел./факс (499) 157-46-71

ПРОДУКЦИЯ Программа STAAD.Pro
для статического, динамического и конструктивного расчета
строительных конструкций код ОК 065 (ОКП): 50 4100

программные средства для общестроительных расчетов, серийный выпуск
СООТВЕТСТВУЕТ ТРЕБОВАНИЯМ НОРМАТИВНЫХ ДОКУМЕНТОВ код ТН ВЭД России:

СНиП 2.01.07-85*, СП 20.13330.2011 (СНиП 2.01.07-85*),
СНиП II-7-81*, СП 14.13330.2011 (СНиП II-7-81*), СНиП II-23-81*,
СП 16.13330.2011 (СНиП II-23-81*), СНиП 52-01-2003, СП 52-101-2003,
ГОСТ Р ИСО 9127-94, ГОСТ Р ИСО/МЭК 12119-2000

ИЗГОТОВИТЕЛЬ Bentley Systems, Inc.
685 Stockton Drive Exton, PA 19341 United States 1-800-BENTLEY (1-800-236-8539)
Outside the United States, +1 610-458-5000

СЕРТИФИКАТ ВЫДАН Bentley Systems, Inc. 685 Stockton Drive Exton, PA 19341 United States 1-800-BENTLEY (1-800-236-8539) Outside the United States, +1 610-458-5000
НА ОСНОВАНИИ

Заключения ООО ЦСПС от 28 февраля 2013 г.

ДОПОЛНИТЕЛЬНАЯ ИНФОРМАЦИЯ Схема сертификации № 3. Без заверенного
печатного приложения на 5-и стр. настоящий сертификат не действителен.

Руководитель органа Т.Н.Бубнова
Эксперт Ю.К.Ролендорф

Сертификат не применяется при обязательной сертификации

СИСТЕМА СЕРТИФИКАЦИИ ГОСТ Р
ФЕДЕРАЛЬНОЕ АГЕНТСТВО ПО ТЕХНИЧЕСКОМУ РЕГУЛИРОВАНИЮ И МЕТРОЛОГИИ

СЕРТИФИКАТ СООТВЕТСТВИЯ

№ РОСС US.CPI15.H00680
Срок действия с 14.03.2014 по 13.03.2016
№ 0896236

ОРГАН ПО СЕРТИФИКАЦИИ РОСС RU.0001.11СП15

ООО ЦСПС. Орган по сертификации программной продукции в строительстве
125057 г. Москва, Ленинградский просп., д.63, тел./факс (499) 157-1990, 157-4671

ПРОДУКЦИЯ Программа Bentley AutoPIPE
для анализа напряжений в трубопроводах код ОК 065 (ОКП): 50 4310

программные средства для автоматизации проектирования и расчетов работ, серийный выпуск
СООТВЕТСТВУЕТ ТРЕБОВАНИЯМ НОРМАТИВНЫХ ДОКУМЕНТОВ код ТН ВЭД России:

СНиП 2.05.06-85*, СП 36.13330.2012 (СНиП 2.05.06-85*),
СНиП 2.04.12-86, СП 33.13330.2012 (СНиП 2.04.12-86), СП 61.13330.2012
(СНиП 41-03-2003), СП 34-116-97, РД 10-249-98, РД 10-400-01, СА 03-003-07,
РД ГТМ 26-01-44-78, РТМ 38.001-94, ВН 39-1.9-005-98, ГОСТ Р ИСО 9127-94,
ГОСТ Р ИСО/МЭК 12119-2000

ИЗГОТОВИТЕЛЬ Bentley Systems, Inc.
685 Stockton Drive Exton, PA 19341 United States 1-800-BENTLEY (1-800-236-8539)
Outside the United States, +1 610-458-5000

СЕРТИФИКАТ ВЫДАН Bentley Systems, Inc. 685 Stockton Drive Exton, PA 19341 United States 1-800-BENTLEY (1-800-236-8539) Outside the United States, +1 610-458-5000
НА ОСНОВАНИИ

Заклучения ООО ЦСПС от 10 марта 2014 г.

ДОПОЛНИТЕЛЬНАЯ ИНФОРМАЦИЯ Схема сертификации № 3. Без заверенного
печатного приложения на 4-х стр. настоящий сертификат не действителен.

Руководитель органа С.Д.Ратнер
Эксперт Т.Н.Бубнова

Сертификат не применяется при обязательной сертификации

Certificate No.5007

for non-exclusive right to use
the software for structural analysis and design
LIRA® version 9.6

LICENSOR:
LIRA soft LTD
Address: Building 6, 19 Pirogovskogo St., Kiev 03110, Ukraine

LICENSEE:
YALÇIN PROJE MİM. MİMARLIK MÜŞAVİRLİK
Address: Akasya Sok. No:2 Mashattan A5 Blok Kat:4 No:34 Maslak -
Şişli / İSTANBUL

Number of workplaces	one licence
License number	96105007
ID keyplug	763260389

Basis:
Copyright license No. 38282 issued on May 10, 2011 by State
Department of Intellectual Property in the Ministry of Education and
Science of Ukraine

Contract No. 27 of October 28, 2013.

Ludmila Skachkova
Director

January 29, 2014



YALCIN PROJECT
ENGINEERING ARCHITECTURE CONSULTATION LIMITED COMPANY

Address: Maslak Mah. Akasya Sok. No:2
Mashattan A5 Blok
Kat:4 Daire:34
Maslak-Sariyer-Istanbul
e-mail: hyalcin@yalcinproje.com

Phone Num: +90 (212) 330 48 64
+90 (212) 330 48 65
Fax: +90 (212) 330 48 65

www.yalcinproje.com